

Wireless WAN

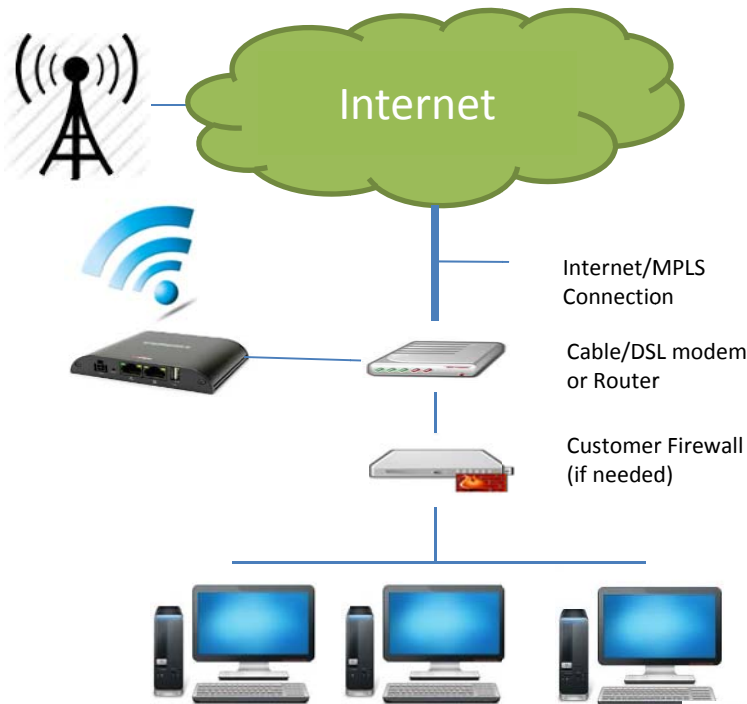
Fast, reliable connectivity at all times.

Our Broadband Wireless Backup provides a multi-carrier, cost-effective, reliable solution to help protect your business from telecom outages, ensuring that mission-critical systems remain online at all times.

Our solution is a great complement to existing technologies, such as T1, T3 MPLS networks, and even basic cable modems. Smart failover technology allows your business to instantly and seamlessly switch to a wireless data connection in case there is a primary network disruption of any kind – from basic network outages, to severe weather damage, or even primary equipment failure.

What we deliver:

- ✓ Multi-carrier, single-platform solutions to ensure proper coverage
- ✓ Plug-and-play, end-to-end managed solution with remote configuration
- ✓ Auto-failover via monitoring, reporting, and alerting of system disruptions
- ✓ Integrated network architecture to ensure constant access to essential applications and services



If primary internet connection is lost...

The Access Point wireless backup device engages and connects to wireless network

Once Primary Internet connection is available, the wireless backup device transitions traffic back to modem /router

Cradlepoint AER1650

